



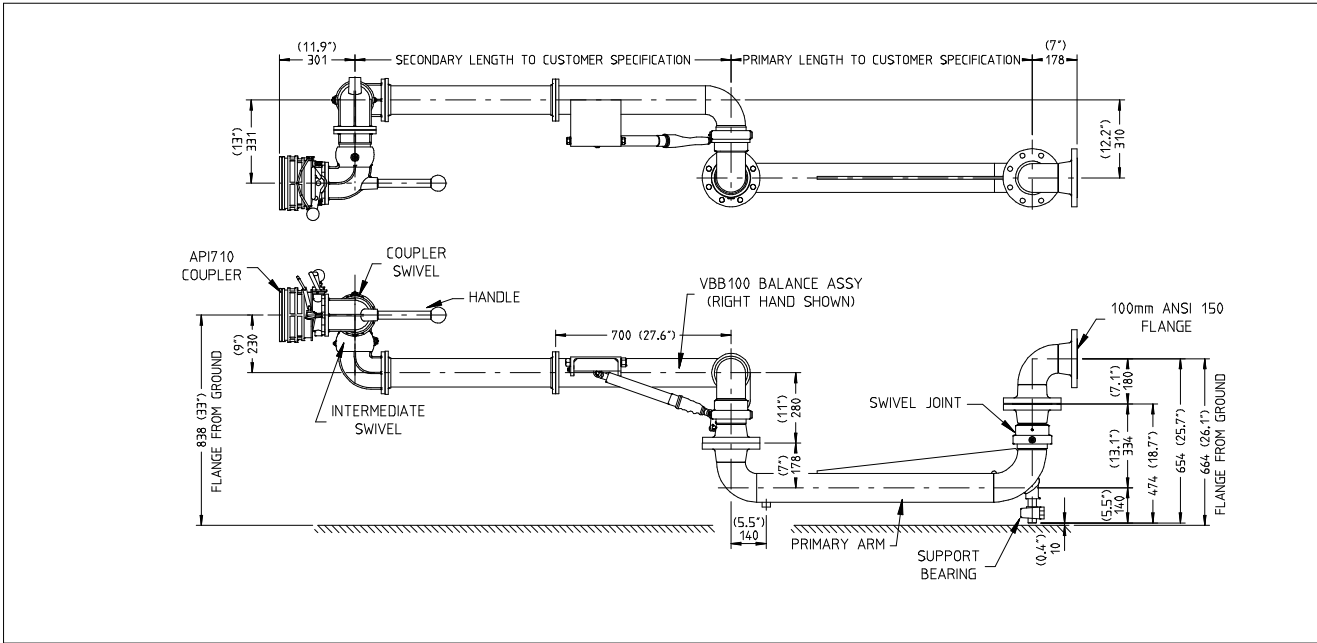
## DESIGN DATA FORM - FIG 2d

LIQUIP INTERNATIONAL PTY. LTD. 13 HUME ROAD SMITHFIELD SYDNEY NSW AUSTRALIA 2164  
 Ph: +61 2 9725 9000 Fax: +61 2 9725 1252 INTERNET: www.liquip.com

### MK3 UNLOADING ARM NEW & RETROFITS

#### JOB DETAILS

CUSTOMER .....	DEL. ADDRESS .....	DEL. DATE .....
SITE MEASURED Y/N BY .....	ASSY DWG. No. ....	ASSY DWG CHKD BY .....
No. OF ARMS REQUIRED .....	MATERIAL & SIZE .....	PAINT COLOUR .....



#### DESIGN INFORMATION

INLET & OUTLET HEIGHTS FROM ROAD LEVEL

1ST ARM FLANGE .....

1ST ARM COUPLER .....

2ND ARM FLANGE .....

2ND ARM COUPLER .....

MINIMUM ARM REACH .....

MAXIMUM ARM REACH .....

#### LOADING ARM ORIENTATION

ASSEMBLY INFORMATION FOR BALANCE

ASSY. VBB100MMVG

RIGHT HAND  LEFT HAND

#### WORKING SPACE/ADDITIONAL INFORMATION

.....

.....

.....

.....

#### CHECKLIST

PART No.	DRAWING No.	DESCRIPTION	1	2
VBB100MMVG	V26998	BALANCE ASSEMBLY		
SJW100MMV	S682	INTERMEDIATE SWIVEL (WELD ON)		
VNI-A4	V856	INTERMEDIATE SWIVEL FLANGED ALUM		
VNC-A4	V85096	COUPLER SWIVEL FLANGED ALUM C/W HANDLE		
API710	A99406	DRY-BREAK COUPLER		
4579Z	---	BEARING & BLOCK		
---	---	TTMA GASKET KIT		
---	---	ANSI 150 GASKET KIT		

#### TTMA GASKET KIT

- 1 x 4248 GASKET KLINGERITE
- 8 x 6745 BOLT M10
- 8 x 6744 NUT M10
- 8 x 5261 SPRING WASHER M10
- 16 x 5288 FLAT WASHER M10

#### ANSI 150 GASKET KIT

- 1 x 4235 GASKET KLINGERITE
- 8 x 4892 STUD 5/8" UNC x 3-1/2" B7
- C/W 2 OFF NUTS 5/8" UNC 2H

#### OPTIONAL EXTRAS

PARKING ADAPTORS PA100

.....

.....

.....

STORE - ASSEMBLIES TO BE CHECKED BY ENGINEERING BEFORE DESPATCH APPROVAL SIGNATURE .....

X1250399  
Issue: C