



MK3 50mm MINE SITE BOTTOM LOADING ARM NEW & RETROFITS

JOB DETAILS

CUSTOMER \_\_\_\_\_ DEL. ADDRESS \_\_\_\_\_ DEL. DATE \_\_\_\_\_

SITE MEASURED Y/N BY \_\_\_\_\_  
ASSY DWG. No. \_\_\_\_\_  
ASSY DWG CHKD BY \_\_\_\_\_  
No. OF ARMS REQUIRED \_\_\_\_\_  
MATERIAL & SIZE \_\_\_\_\_  
PRODUCTS TO BE LOADED \_\_\_\_\_  
PAINT COLOUR \_\_\_\_\_

DESIGN INFORMATION

RISER PIPE FLANGE HEIGHTS (mm)	
1ST ARM	2850
2RD ARM	_____
3RD ARM	_____
4TH ARM	_____
5TH ARM	_____
6TH ARM	_____
(100mm ANSI 150 RF FLANGE)	

LOADING ARM ORIENTATION

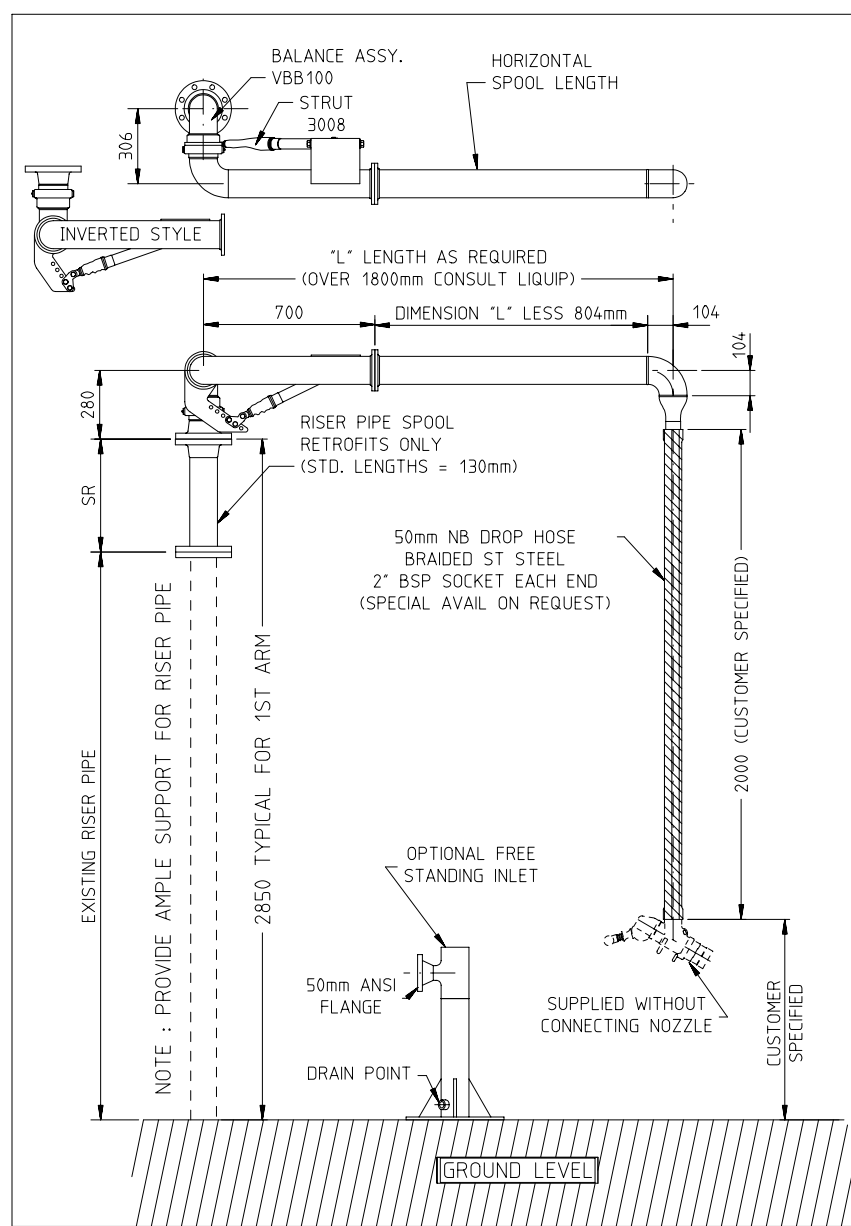
ASSEMBLY INFORMATION FOR BALANCE  
ASSY. VBB100MMV OR VBB100MMIV  
RIGHT HAND  LEFT HAND

WORKING SPACE/ADDITIONAL INFORMATION

\_\_\_\_\_  
\_\_\_\_\_  
\_\_\_\_\_  
\_\_\_\_\_

CHECKLIST

PART No.	DRAWING No.	DESCRIPTION	1	2	3	4	5	6
4235	P4235	GASKET ANSI 150						
L217	L1373-1	RISER SPOOL						
VBB100MMV	V26998	BALANCE ASSEMBLY						
FABRICATED	---	HORIZONTAL SPOOL "L"=						
PURCHASED	---	DROP HOSE ST STEEL						
---	---	TTMA GASKET KIT						
---	---	ANSI 150 GASKET KIT						
OPTIONAL								
FABRICATED	---	FREE STANDING INLET						



TTMA GASKET KIT

- 1 x 4248 GASKET KLINGERITE
- 8 x 6745 BOLT M10
- 8 x 5261 SPRING WASHER M10
- 8 x 6744 NUT M10
- 16x 5288 FLAT WASHER M10

ANSI 150 GASKET KIT

- 1 x 4235 GASKET KLINGERITE
- 8 x 4892 STUD 5/8" UNCx3-1/2" B7
- C/W 2 OFF NUT 5/8" UNC 2H

OPTIONAL EXTRAS

\_\_\_\_\_  
\_\_\_\_\_  
\_\_\_\_\_

STORE - ASSEMBLIES TO BE CHECKED BY ENGINEERING BEFORE DESPATCH APPROVAL SIGNATURE \_\_\_\_\_

X1250000

Issue: B