

EH230 Series Emergency Hatches (metric)

Liquip offers a unique 225mm (9") aluminium emergency inspection hatch with a quick opening lid that doubles as an emergency vent with pressure/vacuum relieving vent and rollover protection. Now supplied in metric.



EH230 series emergency hatches.

Features and Benefits

- Easy to open.
- Two stage opening for added safety.
- Operates as an emergency vent.
- Incorporates a standard Liquip pressure vacuum vent for thermal relief of the tanker (optional).
- Supplied as a complete unit ready for fitting to a tanker or storage tank.
- A wide variety of seals are available depending on the product being stored or transported.

Technical Information

Standards	Complies with Australian Standard AS2809:2020 and pressure settings of EN14595.
2 stage opening	For safety the hatch has a two-stage opening and also acts as an emergency vent. Supplied as a complete assembly.
Pressure and Capacity	For emergency vent opening pressure refer below Emergency Vent capacity: 8,500 m ³ /hr @ 45 kPa. The Weld-in coaming is available in aluminium or mild steel.
Coaming and Seals	Wide variety of seals available to suit various applications & products.
Pressure Vacuum Vents	Optional pressure & vacuum vent can be incorporated. For opening pressure & capacity see PVV104M series datasheet.
Dismantle	Bridge & handle may be taken off by removing e-clips from pivot pins & removing pivots.
Adjustment or Service	Periodically check the seals, check emergency vent for correct opening pressure.
Materials of Construction	Vent cover, bridge and handle: Aluminium Seals: Nitrile (as standard) or Viton (on request as listed in drawing overleaf). Coamings: Aluminum or Mild Steel
Mounting	Coamings are mounted directly into tanker walkway.
Weight	6.0 Kg.

Ordering Information

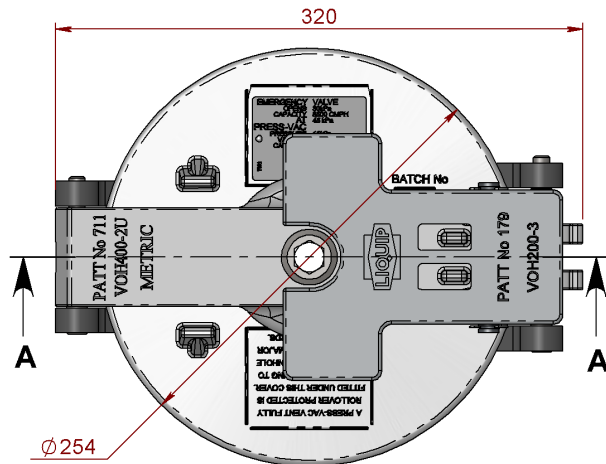
EH230-1-2-3
Example: EH230-A-6A-8A

1	Coaming Material	A Aluminium	M Mild Steel	
2	Emergency Vent	6A Australian market Nitrile seal Opens at 30kPa	6B International markets Nitrile seal Opens at 24 kPa	6U International markets Nitrile seal Opens at 30 kPa
3	Pressure Vacuum Vent	8A PVV104M (Australia) Opens at: 10 to17kPa 0 to -4 kPa vacuum Capacity: 98m ³ /hr at 35 kPa.	80 Blanking Plate	8U PVV104UM (International) Opens at: 8 to 12kPa -0.4 to -2.5 kPa vacuum Capacity: 91m ³ /hr at 30 kPa.

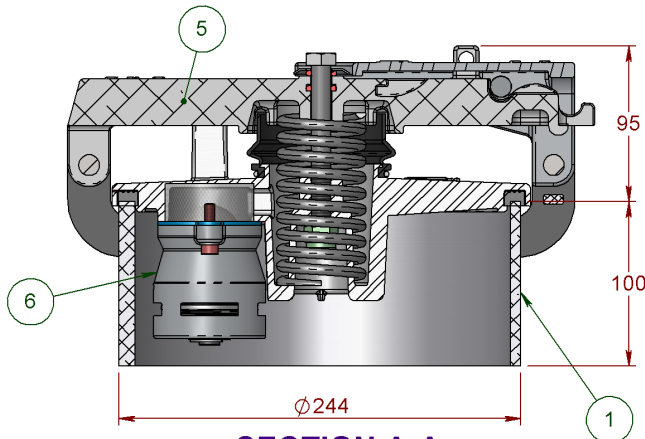
Coamings

- **EH230-1M:** steel coaming hole required: approx Ø245mm
- **EH230-1A:** aluminium coaming 6060 T5 alloy hole required: approx Ø245mm

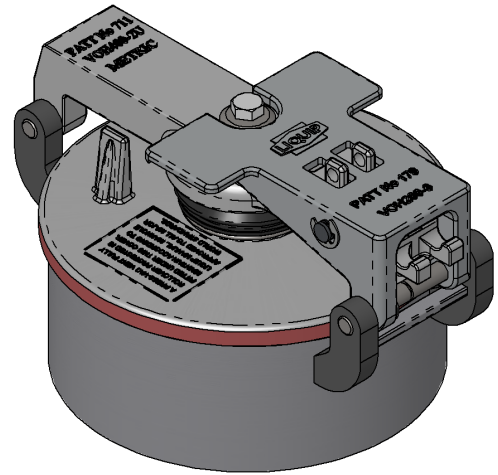
EH230 METRIC EMERGENCY HATCH ASSEMBLIES



TOP VIEW



SECTION A-A



ITEM	PART NUMBER	DESCRIPTION	DESCRIPTION (CONT')	MATERIAL
1	EH230-1A	COAMING ASSEMBLY	9" EMERGENCY HATCHES	ALUMINIUM
	EH231-1A	COAMING ASSEMBLY 60MM HIGH	9" EMERGENCY HATCHES	ALUMINIUM
	EH230-1M	COAMING ASSEMBLY	9" EMERGENCY HATCHES	STEEL
	EH230-1S	COAMING ASSEMBLY	9" EMERGENCY HATCHES	ST STEEL
2	VOH501-32A	EMERGENCY VENT PLAIN BRIDGE & HANDLE	AUST SPRING & LABEL	ALUMINIUM & NITRILE
	VOH501-32AV	EMERG. VENT, BRIDGE & PLAIN HANDLE VITON SEAL 0237	AUST SPRING & LABEL	ALUMINIUM & VITON
	VOH501-32AVG	EMERGENCY VENT PLAIN BRIDGE & HANDLE	AUST SPRING & LABEL	ALUMINIUM & VITON GFLT
	VOH501-32U	EMERG. VENT BRIDGE & PLAIN HANDLE	SPRING & LABEL	ALUMINIUM & NITRILE
	VOH501-32UV	EMERG. VENT BRIDGE & PLAIN HANDLE VITON SEAL 0237	SPRING & LABEL	ALUMINIUM & VITON
3	PVV104-2	BLANKING PLATE	WHEN NO PVV FITTED	ALUMINIUM
	PVV104M	PRESSURE AND VACUUM VENT	AUST SPRING	ALUMINIUM
	PVV104UM	PRESSURE AND VACUUM VENT	INTERNATIONAL VERSION	ALUMINIUM

METERS - VALVES - VENTS - MANHOLES - HOSEREELS - OVERFILL PROTECTION - LOADING ARMS - ELECTRONIC DIPSTICKS



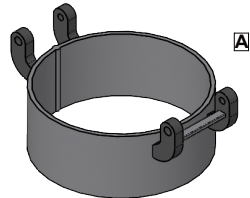
LIQUIP INTERNATIONAL PTY LTD
 148B NEWTON RD, WETHERILL PARK, SYDNEY N.S.W. AUSTRALIA 2164
 Phone: +61 2 9725-9000 Web: www.liquip.com

X400021

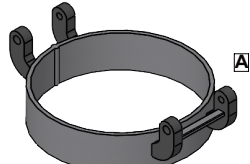
Sheet 1 of 1
Issue: A

**EMERGENCY VENT,
BRIDGE & HANDLE**

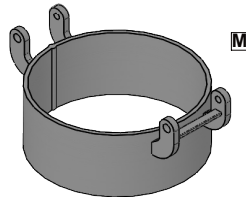
COAMING



EH230-1A
9" ALUMINIUM 100mm COAMING

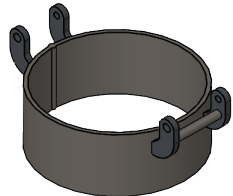


EH231-1A
9" ALUMINIUM 60mm COAMING

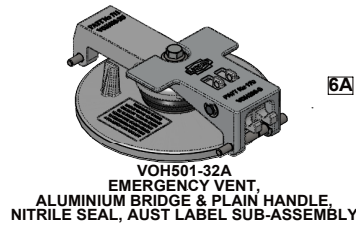


EH230-1M
9" MILD STEEL COAMING

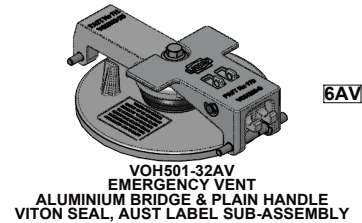
THIS ITEM NOT STOCKED
MADE TO ORDER ONLY



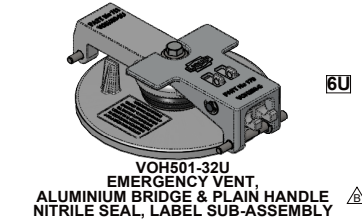
EH230-1S
9" STAINLESS STEEL (316) COAMING



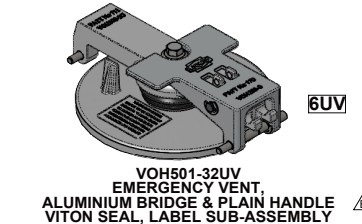
VOH501-32A
EMERGENCY VENT,
ALUMINIUM BRIDGE & PLAIN HANDLE,
NITRILE SEAL, AUST LABEL SUB-ASSEMBLY



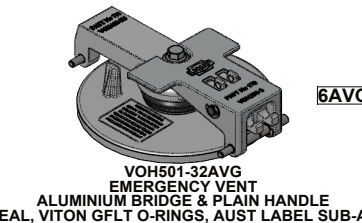
VOH501-32AV
EMERGENCY VENT
ALUMINIUM BRIDGE & PLAIN HANDLE
VITON SEAL, AUST LABEL SUB-ASSEMBLY



VOH501-32U
EMERGENCY VENT,
ALUMINIUM BRIDGE & PLAIN HANDLE
NITRILE SEAL, LABEL SUB-ASSEMBLY



VOH501-32UV
EMERGENCY VENT,
ALUMINIUM BRIDGE & PLAIN HANDLE
VITON SEAL, LABEL SUB-ASSEMBLY



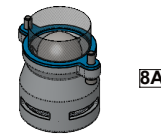
VOH501-32AVG
EMERGENCY VENT
ALUMINIUM BRIDGE & PLAIN HANDLE
NITRILE SEAL, VITON GFLT O-RINGS, AUST LABEL SUB-ASSEMBLY

EH230 INSPECTION HATCH ASSEMBLIES

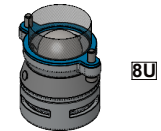
**PRESSURE &
VACUUM VENT**



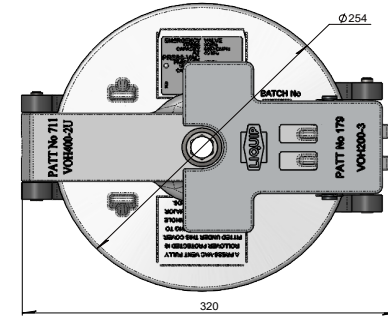
PVV104-2
BLANKING PLATE
4250 GASKET NBR CORK
5269 WASHER SPRING
55024 CAPSCREW M6 x 25



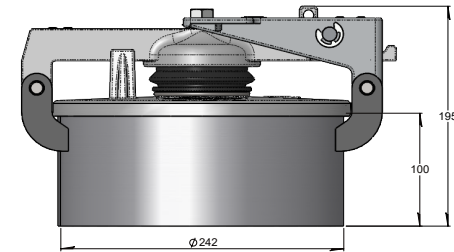
PVV104M
(AUSTRALIA)



PVV104UM
(INTERNATIONAL)



TOP VIEW



FRONT VIEW

METRIC ASSEMBLY NUMBERS:

EXAMPLE: **EH230-A-6A-8A**

COAMING LENGTH _____
 COAMING MATERIAL _____
 EMERGENCY VENT SUB-ASSY _____
 PVV VENT OR BLANKING _____

**NOTE: SPECIAL ALL STAINLESS STEEL INSPECTION HATCH
AVAILABLE. MADE TO ORDER
SEE PART No. EH230-SS-B**

B	REMOVED "UK" AND ADDED "INTERNATIONAL"	HT	28-Sep-21	23-022
A	ORIGINAL ISSUE	DT	26/08/2020	19-027
REV.	REVISION DESCRIPTION	BY	DATE	MDC REF

DRAWING TITLE: EMERGENCY HATCH 9" INSPECTION OPENING		LIQUIP PART	EH230 SERIES
MATERIAL: _____ SEE TABLE		DRAWN	17/3/03
HEAT TREATMENT: _____ NONE		ASSY DWG	N/A
PROTECTIVE TREATMENT: _____ NONE		PART No	N/A
REMOVE ALL SHARP EDGES AND BURRS		SCALE	1:3
THIS IS CONFIDENTIAL INFORMATION IF IN DOUBT, ASK!		BLANKS	0/23
THIS DRAWING AND DESIGN IS THE PROPERTY OF LIQUIP INTERNATIONAL PTY LTD. IT MUST NOT BE COPIED OR REPRODUCED IN ANY WAY WHATSOEVER AND/OR PASSED ON TO ANY THIRD PARTY WITHOUT WRITTEN AUTHORITY.		DRAWN BY	DT
		DATE	17/3/03
		ISSUE	1
		DRAWING NO	E55103
		ISSUE	B
		REV	0