



THIS IS CONFIDENTIAL INFORMATION.
THIS DRAWING AND DESIGN IS THE PROPERTY OF LIQUIP INTERNATIONAL PTY LIMITED.
IT MUST NOT BE COPIED OR REPRODUCED IN ANY WAY WHATSOEVER AND/OR PASSED ON
TO ANY THIRD PARTY WITHOUT WRITTEN AUTHORITY.

LIQUIP INTERNATIONAL PTY LIMITED - ENGINEERING DEPARTMENT - 13 HUME RD SMITHFIELD SYDNEY NSW AUSTRALIA 2164
PH: +61 2 9725 9000 FAX: +61 2 9609 4739 EMAIL: engineering@liquip-nsw.com.au

ARO Series Sequential Air Ram Fitting and Maintenance Instructions

Part No: 6418

Air ram sub-assemblies come sealed in a plastic bag to protect from dirt and foreign objects. Do not remove until ready to install.

Air connections

ARO series air rams have 3 ports & all of them are threaded 1/8" BSPP (see fig 1).

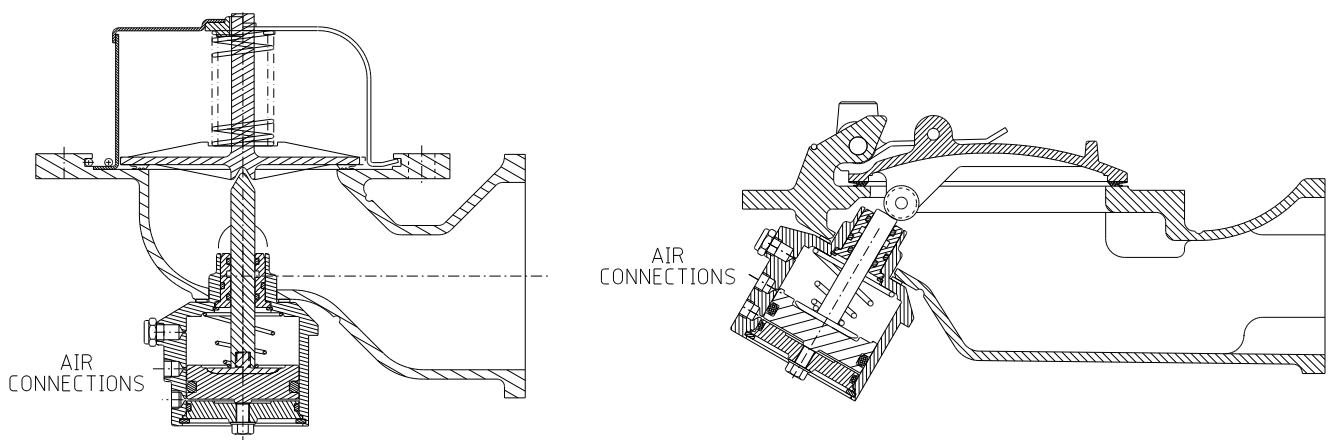
- The port closest to the mounting face is the air exhaust port that comes with silencer already installed. Unless another connection is required, it is recommended to leave the silencer that also protects the air ram from drawing in foreign objects that may cause damage.
- The middle port is the sequential outlet. It is plugged as standard, but may be connected to the inlet of another air ram to allow valves to open one after the other.
- The port closest to the back of the air ram is the air inlet. It has been temporarily plugged to keep out foreign objects, but this is the one port that must have an air supply for the ram to operate. When pressure is supplied, the valve will open and when pressure is removed, an internal spring will close it.

Air ram mounting

Mounting of the air ram is by 2 setscrews; their length is dependent on what valve it will be mounted to (SLV5 or EFV series footvalves).

Tighten mounting bolts to a torque of 16Nm (12 ft lbs).

Orientation of the ram should be such that the air inlets will point in the opposite direction to the valve outlet (see below).



Manual override

In the event of air pressure loss to ram, an M6 x 20mm long screw (a 'jacking screw') can be used to manually open the valve. Simply remove setscrew from the back of the air ram and replace it with the jacking screw. Screwing in the jacking screw will physically activate the air ram poppet and cause the valve to open (although not fully).



THIS IS CONFIDENTIAL INFORMATION.
THIS DRAWING AND DESIGN IS THE PROPERTY OF LIQUIP INTERNATIONAL PTY LIMITED.
IT MUST NOT BE COPIED OR REPRODUCED IN ANY WAY WHATSOEVER AND/OR PASSED ON
TO ANY THIRD PARTY WITHOUT WRITTEN AUTHORITY.

LIQUIP INTERNATIONAL PTY LIMITED - ENGINEERING DEPARTMENT - 13 HUME RD SMITHFIELD SYDNEY NSW AUSTRALIA 2164
PH: +61 2 9725 9000 FAX: +61 2 9609 4739 EMAIL: engineering@liquip-nsw.com.au

Periodic Maintenance

Check all o-rings for damage and inspect ram poppet and actuating shaft bush for wear. Apply 5ml of general purpose grease to the front chamber of the ram by coating poppet head all over and also add grease to the grease groove between the o-rings as shown. Replace existing gasket with a new blue Viton gasket (Liquip part 0273V) when reassembling. If performing periodic maintenance on a chemical valve ensure a Teflon gasket (Liquip part 4646) when reassembling.

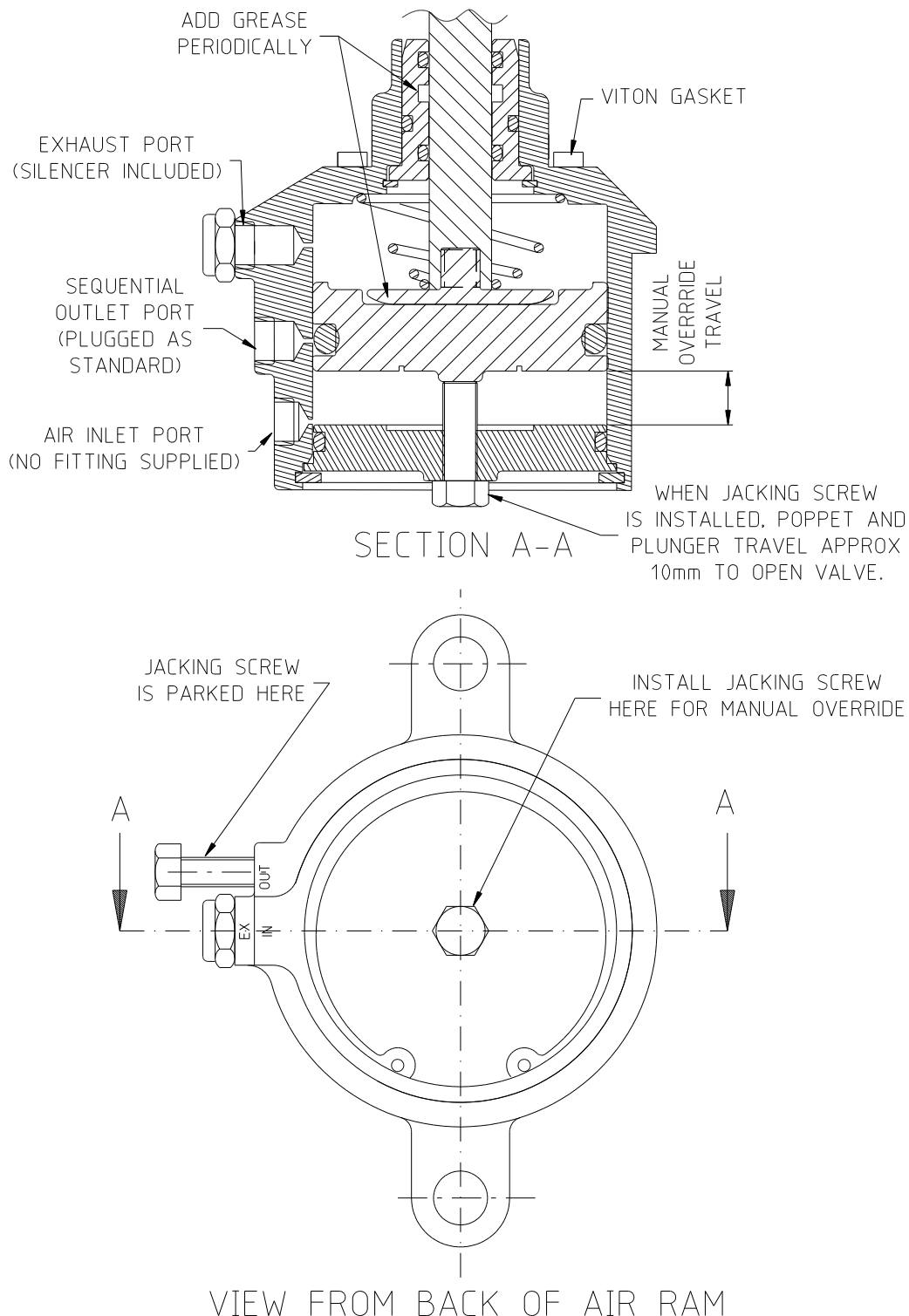


Fig 1